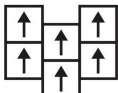




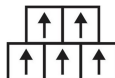
#### Recommended Installation Method



1/4 Turn



Ashlar



Brick

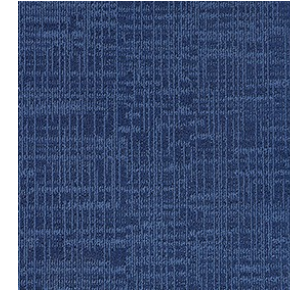


039-017-2094  
Environmentally  
Preferred Carpet

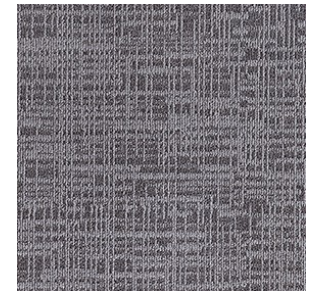
## WARP & WEFT SQ



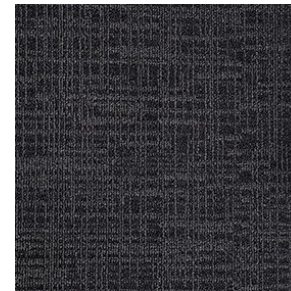
WW232301  
Sable Brown



WW232302  
Blue Stream



WW232311  
Grey Cat



WW232312  
Espresso

#### Specifications

Construction

Yarn

Dye Method

Pile Weight

Total Thickness

Backing

Tile Size

Multi-Level Tufted Pattern Loop Pile

BCF Synthetic Fiber

100% Solution Dyed

19 oz/yd<sup>2</sup>

6.0mm

FlexiBac

50cm x 50cm

#### Performance

Radiant Panel

Smoke Density

Static Propensity

Color Fastness to Light

Dimension Stability

Foot Traffic Recommendation TAAR

Antimicrobial

Certificates

ASTM 648 Class 1

ASTM 662 Less than 450

AATCC 134 Less than 3.5Kv

AATCC 16E ≥4

AACHEN ≤0.2%

Medium Commercial

Health Guard

Singapore Green Label Certification

Singapore Green Building Product

Certification (4 thick)